

CONCUSSION LEGACY FOUNDATION

ANNUAL REPORT

2015



TABLE OF CONTENTS

3	LETTER FROM LEADERSHIP
4	OUR MISSION & VISION
5	EDUCATION
6	INNOVATION & POLICY
9	LEADING THE CONVERSATION
10	RESEARCH
12	FINANCIAL SNAPSHOT
13	OUR TEAM

A LETTER FROM LEADERSHIP

As awareness about concussions and Chronic Traumatic Encephalopathy grows, it becomes increasingly clear that there are no quick fixes. With that in mind, in 2015 we rebranded the organization to be better positioned for the long term fight for prevention and treatment.

In September, we launched our new name, the Concussion Legacy Foundation, as well as our logo and website, ConcussionFoundation.org. Our program success continued uninterrupted. Major 2015 accomplishments toward prevention and treatment included:

- Our Safer Soccer campaign, to delay the introduction of heading in soccer until age 14, had a major triumph after only 17 months when US Soccer announced in November that they would ban heading prior to age 11 and restrict heading from ages 11-13.
- The VA-BU-CLF Brain Bank, led by Dr. Ann McKee, continued to advance CTE research in 2015 by providing the brain samples that led to the development of the NINDS CTE criteria, the first ever government approved post-mortem CTE diagnostic criteria and a major step forward in research.
- Brain donation continues to be the primary driver of awareness and research globally, so in December, we launched the My Legacy campaign, with more famous athletes pledging their brain to the Concussion Legacy Foundation. We have enabled 50 new research studies utilizing brain tissue from the VA-BU-CLF Brain Bank, exponentially increasing the number of scientists working on a cure.

Together we are building an organization for the long term; one that can continue this effort until the problem is solved. Thank you for supporting the Concussion Legacy Foundation.

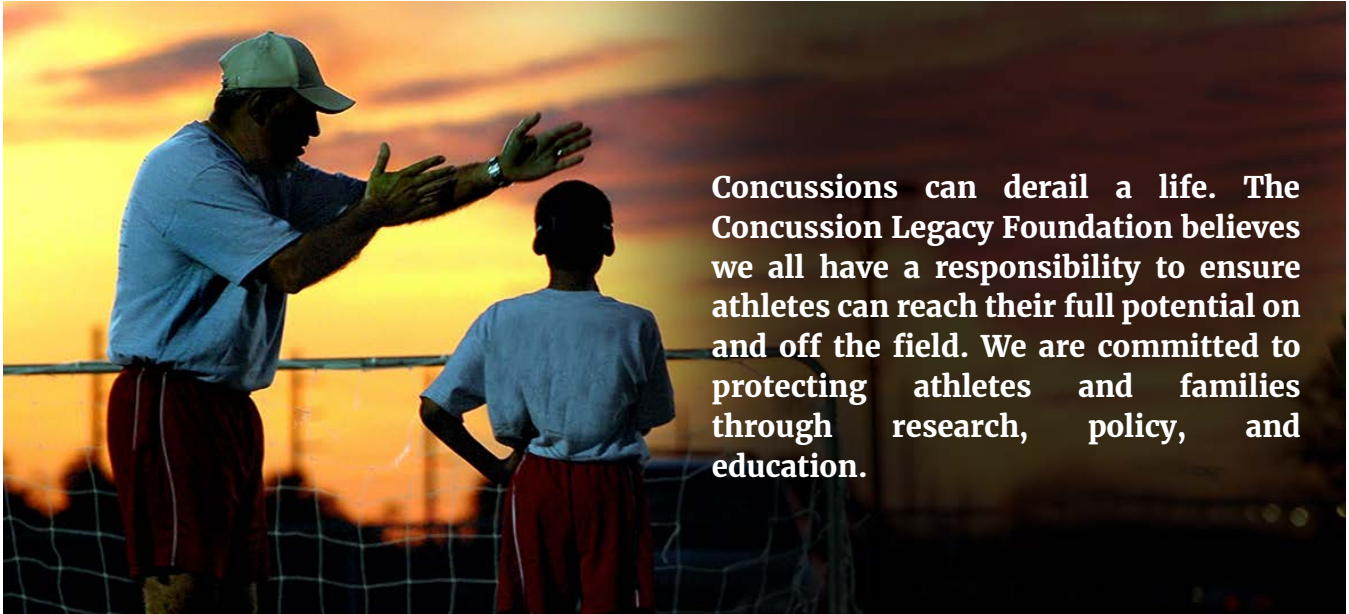


Christopher Nowinski



Tina Cantu

OUR MISSION AND VISION



Concussions can derail a life. The Concussion Legacy Foundation believes we all have a responsibility to ensure athletes can reach their full potential on and off the field. We are committed to protecting athletes and families through research, policy, and education.

OUR MISSION STATEMENT

The Concussion Legacy Foundation is dedicated to advancing the study, treatment and prevention of the effects of brain trauma in athletes and other at-risk groups.

OUR VISION STATEMENT

Our vision is a world without CTE, and concussion safety without compromise.

EDUCATION

CREATING CHANGE FROM THE BOTTOM UP THROUGH OUR COMMUNITY PROGRAMS

The Concussion Legacy Foundation held over 150 Advanced Concussion Training sessions on three continents, which reached nearly 20,000 coaches, parents, and healthcare providers from 2012-2015.

The Concussion Legacy Foundation held over 125 Team Up Against Concussions youth education programs, which reached over 15,000 children from 2012-2015.



OUR TEAM UP CHAPTERS



INNOVATION & POLICY

SAFER SOCCER

We launched Safer Soccer in 2014 to educate parents, coaches, and soccer stakeholders on the benefits of delaying the introduction of heading in youth soccer until high school. We built a coalition including over 20 sports, health, and concussion organizations, as well as legends of US Soccer including Brandi Chastain, Cindy Parlow Cone, and Taylor Twellman. After 17 months of public pressure, **in November U.S. Soccer announced they are banning heading until age 11, and restricting it until 14.** It is a major victory, but we will continue to fight for youth athletes.



OUR SAFER SOCCER SUPPORTERS INCLUDE



INNOVATION & POLICY

INFLUENCING GLOBAL CHANGE FROM THE TOP DOWN

Dr. Robert Cantu and Chris Nowinski are proud to serve as volunteer advisors to more professional and collegiate sports organizations than any concussion-focused nonprofit in the world. When professionals change, youth sports follow.



WORLD RUGBY[™]



NFL PLAYERS
ASSOCIATION



INNOVATION & POLICY

SYNTHETIC TURF & CONCUSSION

In December, the Foundation launched a national conversation on synthetic turf safety with the publication of a White Paper, earning praise in the New York Times and USA Today.

WHITE PAPER



The Role of Synthetic Turf in Concussion

Introduction

As evidence of the serious consequences of concussion and repetitive brain trauma grows, the search intensifies for new methods of concussion prevention and mitigation. When it comes to the role of equipment and padding, helmets, headgear, and mouth guards dominate the conversation. One opportunity to reduce risk that is consistently overlooked is the role of the playing surface, and particularly the opportunity to reduce concussion risk by providing safer fields.



“It’s rare that a truly new revelation emerges in the fight to protect football minds, yet a new study from the Concussion Legacy Foundation may have uncovered just such a leaf.”

- USA Today, December 30, 2015



Concussion Report Highlights Field Maintenance
“But one little-explored cause of concussions is the field beneath the feet of the millions of athletes who play football, lacrosse, soccer and other sports.”

- NY Times, December 29, 2015

LEADING THE CONVERSATION

RAISING AWARENESS BY DRIVING A GLOBAL CONVERSATION

The Concussion Legacy Foundation leadership and researchers appeared in over 50 television and documentary appearances and over 180 print articles, making them the most quoted experts on concussions and CTE.



The
New York
Times



The
Boston
Globe



Los
Angeles
Times

CNN



ESPN



REAL SPORTS
WITH BRYANT GUMBEL



newstalk.
106-108 fm



RESEARCH

VA-BU-CLF BRAIN BANK

Through our partnership with the VA-BU-CLF Brain Bank, we have developed the greatest chronic traumatic encephalopathy research resource in the world.

One goal of a Brain Bank is to share tissue with independent researchers for innovative studies meant to advance our understanding of CTE, so that we can develop effective interventions and treatments. We are proud to have supported 50 innovative research projects since 2008.

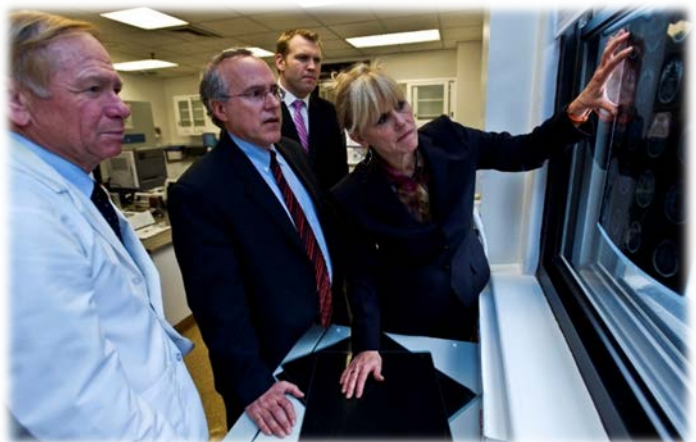
Brain Bank in Numbers:

- 320 brains
- 175 confirmed CTE cases
- 88 of 92 former NFL players and 41 of 50 former college football players have tested positive for CTE
- Tissue has been shared for use in over 50 original research studies around the world



We were the first to identify CTE in athletes whose primary exposure was:

- Soccer
- Rugby
- Baseball
- College Football
- High School Football



RESEARCH

NIH/NINDS CRITERIA FOR DIAGNOSIS OF CTE

As part of the BU led UNITE Study, on behalf of the National Institutes of Health Dr. Ann McKee convened the world's experts on neurodegenerative diseases to establish the first ever consensus diagnostic criteria for CTE, which will allow any doctors around the world to independently diagnose CTE post-mortem. The VA-BU-CLF Brain Bank served as the backbone of this process.

Acta Neuropathol
DOI 10.1007/s00401-015-1515-z



CONSENSUS PAPER

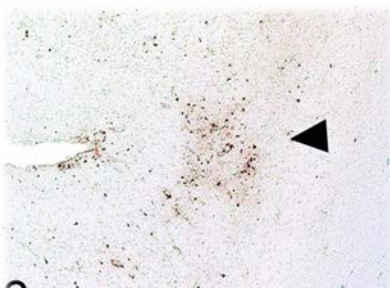
The first NINDS/NIBIB consensus meeting to define neuropathological criteria for the diagnosis of chronic traumatic encephalopathy

Ann C. McKee^{1,2,3,4,5} · Nigel J. Cairns⁶ · Dennis W. Dickson⁷ · Rebecca D. Folkerth⁸ · C. Dirk Keene⁹ · Irene Litvan¹⁰ · Daniel P. Perl¹¹ · Thor D. Stein^{2,3,4,5} · Jean-Paul Vonsattel¹² · William Stewart¹³ · Yorghos Tripodis^{3,14} · John F. Crary¹⁵ · Kevin F. Bieniek⁷ · Kristen Dams-O'Connor¹⁶ · Victor E. Alvarez^{1,2,3,4} · Wayne A. Gordon¹⁶ · the TBI/CTE group

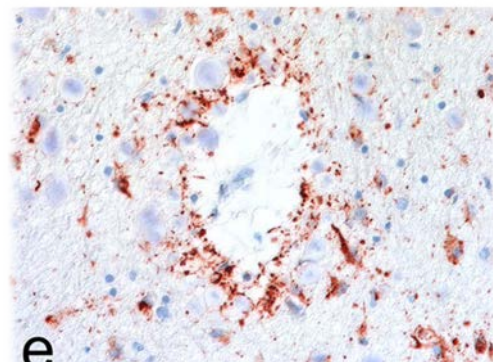
Received: 15 October 2015 / Revised: 29 November 2015 / Accepted: 29 November 2015
© The Author(s) 2015. This article is published with open access at Springerlink.com

Abstract Chronic traumatic encephalopathy (CTE) is a neurodegeneration characterized by the abnormal accumulation of hyperphosphorylated tau protein within the brain. Like many other neurodegenerative conditions, at present, CTE can only be definitively diagnosed by post-mortem

CTE, Alzheimer's disease, progressive supranuclear palsy, argyrophilic grain disease, corticobasal degeneration, primary age-related tauopathy, and parkinsonism dementia complex of Guam. The results demonstrated that there was good agreement among the neuropathologists who



p-Tau immunopositive subpial astrocytes accompanied by perivascular foci of p-tau positive neurons and astrocytes (arrowhead) at the depths of the sulci are diagnosis for CTE.



p-Tau immunopositive astrocytes surrounding small venules in the deep white matter of the temporal lobe are not diagnostic for CTE and are often found in association with aging.

FINANCIAL SNAPSHOT

CONCUSSION LEGACY FOUNDATION BY THE NUMBERS

The figures on this page depict the financial activities of the Concussion Legacy Foundation for the fiscal year ending December 31, 2015.

STATEMENT OF ACTIVITIES

Public Support and Other Revenue	
Contributions:	\$1,643,774
Program Services Revenue:	\$39,375
Investment Income	\$791
Other Revenue:	\$41,139
Total Revenue:	\$1,725,079

EXPENSES

Research Grants:	\$252,029
Program Service Expenses:	\$623,102
Management and General:	\$144,608
Fundraising:	\$223,293
Total Expenses:	\$1,243,033

STATEMENT OF FINANCIAL POSITION

Cash, Cash Equivalents & Investments:	\$777,745
Property & Equipment:	\$9,910
Other Assets:	\$8,991
Pledges & Accounts Receivable:	\$1,527,600
Total Assets:	\$2,343,920

OUR TEAM

STAFF

Chris Nowinski

CO-FOUNDER, EXECUTIVE DIRECTOR

Robert Cantu, M.D.

CO-FOUNDER, MEDICAL DIRECTOR

Liz Cahn

DIRECTOR OF DEVELOPMENT

Lisa McHale

DIRECTOR OF FAMILY RELATIONS

Beckie Adams

DEVELOPMENT OPERATIONS MANAGER

Tyler Maland

COMMUNICATIONS AND MARKETING MANAGER

Cliff Robbins

PROGRAM MANAGER, EDUCATION AND RESEARCH

2015 BOARD OF DIRECTORS

Tina Cantu

PRESIDENT

OFFICERS

Greg Feasel

VICE PRESIDENT

Peter Carfagna

SECRETARY

Matt McKenzie

TREASURER

DIRECTORS

Jeanne Andlinger

Peter Carfagna

David Fitzhenry

Kevin Haley

Rob Johnson

Barbara Jones

Rick Kelleher

Paul Levesque

Tony Lyons

Sylvia Mackey

Matt McKenzie

Carol Quimby-Bonan



\$50,000+

Jeanne & Gerhard Andlinger
Anonymous
David & Jill Fitzhenry
Richard & Elizabeth Hussey
Martin & Tristin Mannion
Mintz, Levin, Cohn, Ferris, Glovsky &
Popeo PC
Oak Foundation
WWE

\$20,000 - \$49,999

Brock USA, LLC.
John Corcoran
Pritzker Traubert Family Foundation
Trinity Partners, LLC.
Wal-Mart Stores, Inc.
Warren B. Kanders Foundation

\$10,000 - \$19,999

Eric Pelly Sports Education Fund
Sandy & Gary Fencik
The Hollingsworth Fund
Kelleher Family Charitable Trust
Matthew Lustig & Andrea Pomerantz-
Lustig
Peter & Yvette Mulderry
Tom & Liz Niedermeyer
Oristaglio Family Foundation
Carol Quimby-Bonan
Carmen Scarpa
Douglas & Caroline Warren

\$5,000 - \$9,999

Boston Bruins Charitable Foundation
Peter & Rita Carfagna
Scott Cohen
Jeremy & Marci Cohen
The Daniel Brett Foundation
Bob & Karen Forlenza
Robert & Stacy Johnson
David & Lesley Koeppel
Joan Pelly
Eleanor Perfetto
Dan Sawyer

\$1,500 - \$4,999

Gary & Pennie Abramson Charitable
Foundation
Robert & Tina Cantu
The Charles Bronfman Fund at
Brandeis University
Michael & Mary Anne Cola
Greg & Lynn Feasel
Charlie & Betsey Gifford
Edward & Karen Hanlon
Matthew & Elaine Henshon
Bruce Jacobs
Cynthia C. & Seth W. Lawry Family
Foundation
David Lynch
Matthew McKenzie
Chris & Nicole Nowinski
David Reiss
Kartik Shah
Clark Stevenson
Thornburg Investment Management
Kathleen Willis
Thomas Brady & Associates

\$1,000 - \$1,499

Beatrice C. Mayer Charitable Account
Harry Bartlett
Joshua Bresler
Community Foundation of New Jersey
David Drubner
Claire Dwoskin
Mary Ann Easterling
Golden Apple Foundation
Beatrice Mayer
Stephen & Dawn McKenna
The David & Meredith Kaplan
Patricia King
Lance LaFave
Tony Lyons & Sheila Ryan
James Maland
Gordon & Janice Nuber
Marc Quilling
Raymond P. Ginther and Marie M.
Ginther Charitable Fund
Julian Swearengin
Graham Thomas